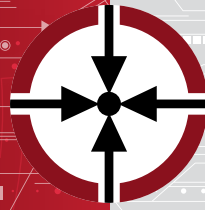


ESPP-MIT2

Medium Isolated
Ceramic Capacitive Pressure Transmitters



ES Systems has developed a series of pressure sensor transmitters featuring very good accuracy at low cost. Each module integrates a ceramic pressure sensor designed for general industrial and commercial use, compatible for a wide range of applications. Utilizing the cointegrated ASIC signal conditioning chip and dry ceramic capacitor pressure sensor, ESPP-MIT2 features excellent anti-corrosion, anti-wear, anti-shock and vibration characteristics. In addition, the ceramic capacitor pressure sensor has high temperature stability and long-term stability, and can be in direct contact with almost all media.

The output is fully calibrated and temperature compensated based on the internal temperature sensor and the factory calibration coefficients which are stored in the embedded memory. Thus, the transducer is ready to be installed directly to the end user system without further processing.

ESPP-MIT2 comes with a variety of electrical interfaces output signal types and process interfaces. It is one of the most cost-effective solutions especially when high volumes are required.



62, I. Metaxa str.
19441 Koropi - Athens, Greece

T +30 216 2000500

F +30 216 2000555

info@esenssys.com

www.esenssys.com

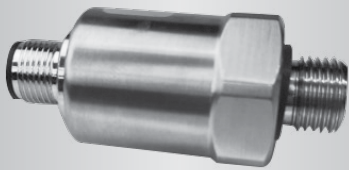


ESPP-MIT2

Medium Isolated
Ceramic Capacitive Pressure Transmitters

Specifications

Pressure Type	Gauge, Compound
Pressure Range	Up to 60 bar
Power Supply	+12V ... +30V
Total Error	< ±2.5 %FS
Operating Temperature	-20°C ... +70°C
Compensation Temperature	-20°C ... +70°C
Output	Calibrated Pressure
Output Interface	4-20mA, 0.5-4.5
Overpressure Tolerance	Up to 2x
Media Compatibility	Gases, Liquids
Material	Stainless steel 304
Connection Type	M12, ISO4400, Cable, Packard
Process Interface	See table below
Dimensions	Height: 53mm Diameter \varnothing 24.5mm



Ordering Information

ESPP-MIT2 - N - NNNNNN - NN - NN - NN

Pressure Type	Pressure Range	Full Scale	Process Interface			
			01	02	03	04
1 Gauge						
2 Compound	0010BG	10 bar				
	0016BG	16 bar				
	0025BG	25 bar				
	0040BG	40 bar				
	0050BG	50 bar				
	0060BG	60 bar				
Output Type			Connector			
			01	02	03	04
			01	02	03	04
			01	02	03	04
			01	02	03	04
			01	02	03	04
			01	02	03	04



62, I. Metaxa str.
19441 Koropi - Athens, Greece
T +30 216 2000500
F +30 216 2000555
info@esenssys.com

www.esenssys.com