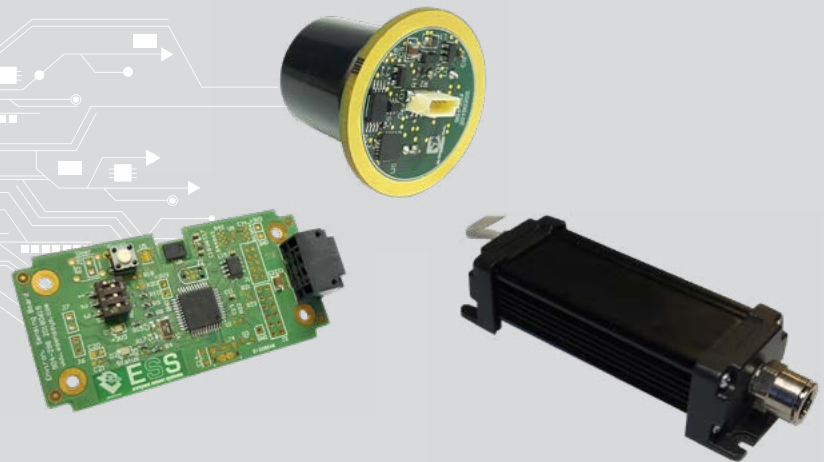


ESEN-MESN

Multipurpose Environmental
Sensing Nodes



ES Systems has developed an environmental sensing board system featuring multiple sensors for environmental monitoring that can be utilized in a variety of applications and industries. The ESEN-MESN system integrates pressure, humidity, temperature, TVOC, CO, NO₂, CO₂ sensors that can be integrated in custom tailored boards that fit each end user's tailored defined mechanical specifications. ESEN-MESN supports both wired and wireless communication enabling optimal connectivity capabilities. The wireless capability enables installation in remote locations with minimal installation cost. ESEN-MESN supports various wireless communication protocols making it easy to integrate in any network infrastructure.



62, I. Metaxa str.
19441 Koropi - Athens, Greece

T +30 216 2000500

F +30 216 2000555

info@esenssys.com

www.esenssys.com





ESEN-MESN

Multipurpose Environmental
Sensing Nodes

Specifications

MESN1

Supply Voltage	3.3V
Communication Interface	I ² C
Pressure	
Range	0-4 barg
Total Error	±1% FS
Compensating Temperature	0°C...+60°C
Humidity	
Range	0-100% RH
Accuracy	±2% RH
Temperature	
Range	-40°C... +125°C
Accuracy	+0.2°C

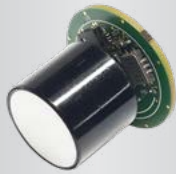
MESN18

Voltage	3.3V, 24V
Communication Interface	I ² C, RS-485 (MODBUS—RTU), WiFi, BLE
Pressure	
Range	0-4 barg
Total Error	±1% FS
Compensating Temperature	0°C...+60°C
Humidity	
Range	0-100% RH
Accuracy	±2% RH
Temperature	
Range	-40°C... +125°C
Accuracy	+0.2°C

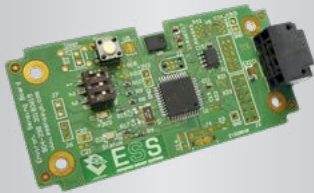
MESN2

Communication Interface	I ² C, RS-485 (MODBUS—RTU), WiFi, BLE
Pressure	
Range	0-4 barg
Total Error	±1% FS
Compensating Temperature	0°C...+60°C
Humidity	
Range	0-100% RH
Accuracy	+/-2% RH
Temperature	
Range	-40°C... +125°C
Accuracy	±0.2°C
TVOC	
Range	0 ... 60000ppb
Sensitive to	Acetone Butylacetate, Cyclohexan Ethanol, Formaldehyde, Hydrogen, Toluene
CO	
Range	0..1000ppm
NO2	
Range	0.05... 10ppm
CO2	
Range	0.. 2000ppm
Resolution	1ppm
Accuracy	+50ppm +3% mv.

MESN1



MESN18



MESN2



62, I. Metaxa str.
19441 Koropi - Athens, Greece

T +30 216 2000500

F +30 216 2000555

info@esenssys.com

www.esenssys.com