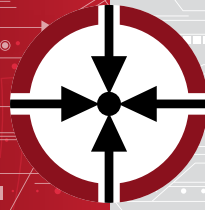


# ESPP-MIT2

Medium Isolated  
Ceramic Capacitive Pressure Transmitters



ES Systems has developed a series of pressure sensor transmitters featuring very good accuracy at low cost. Each module integrates a ceramic pressure sensor designed for general industrial and commercial use, compatible for a wide range of applications. Utilizing the cointegrated ASIC signal conditioning chip and dry ceramic capacitor pressure sensor, ESPP-MIT2 features excellent anti-corrosion, anti-wear, anti-shock and vibration characteristics. In addition, the ceramic capacitor pressure sensor has high temperature stability and long-term stability, and can be in direct contact with almost all media.

The output is fully calibrated and temperature compensated based on the internal temperature sensor and the factory calibration coefficients which are stored in the embedded memory. Thus, the transducer is ready to be installed directly to the end user system without further processing.

ESPP-MIT2 comes with a variety of electrical interfaces output signal types and process interfaces. It is one of the most cost-effective solutions especially when high volumes are required.



62, I. Metaxa str.  
19441 Koropi - Athens, Greece

**T** +30 216 2000500

**F** +30 216 2000555

**info@esenssys.com**

**www.esenssys.com**

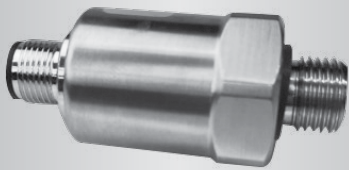


# ESPP-MIT2

Medium Isolated  
Ceramic Capacitive Pressure Transmitters

## Specifications

<b>Pressure Type</b>	Gauge, Compound
<b>Pressure Range</b>	Up to 60 bar
<b>Power Supply</b>	+12V ... +30V
<b>Total Error</b>	< ±2.5 %FS
<b>Operating Temperature</b>	-20°C ... +70°C
<b>Compensation Temperature</b>	-20°C ... +70°C
<b>Output</b>	Calibrated Pressure
<b>Output Interface</b>	4-20mA, 0.5-4.5
<b>Overpressure Tolerance</b>	Up to 2x
<b>Media Compatibility</b>	Gases, Liquids
<b>Material</b>	Stainless steel 304
<b>Connection Type</b>	M12, ISO4400, Cable, Packard
<b>Process Interface</b>	See table below
<b>Dimensions</b>	Height: 53mm   Diameter $\varnothing$ 24.5mm



## Ordering Information

ESPP-MIT2 - N - NNNNNN - NN - NN - NN

Pressure Type	Pressure Range	Full Scale	Output Type	Connector	Process Interface
1 Gauge					
2 Compound	0010BG	10 bar	01 4-20mA	01 M12	01 G1/4" male
	0016BG	16 bar	02 0.5-4.5V	02 ISO4400	02 1/4" NPT male
	0025BG	25 bar		03 Cable (0.5m)	03 G1/8" male
	0040BG	40 bar		04 Packard	04 1/8" NPT male
	0050BG	50 bar			05 M12 x 1.5 male
	0060BG	60 bar			06 M10 x 1 male
					07 7/16-20UNF female



62, I. Metaxa str.  
19441 Koropi - Athens, Greece  
**T** +30 216 2000500  
**F** +30 216 2000555  
**info@esenssys.com**

**www.esenssys.com**